

# A DESCRIPTIVE STUDY TO ASSESS THE PERSONALITY DEVELOPMENT AMONG THE ORPHAN CHILDREN AT SELECTED ORPHANAGE HOME IN PUDUCHERRY.

**Mr.GNANASEKAR. G M.SC.,(N),**

Assistant Professor, Dept. Of Mental Health Nursing,

Vinayaka Missions College of Nursing, Kirumampakkam, Bahoor commune,  
Puducherry-607402. Afiliated to Vinayaka missions Research Foundation, Salem.

## ABSTRACT

A descriptive study with cross sectional survey approach was undertaken to assess the personality development among the orphan children in a selected orphanage home Puducherry. 30 orphan children were selected by purposive sampling techniques and the data was collected by using personality development tool. Demographic characteristics depends that highest percentage of orphan children were in age of 15 to 20 years (56.7%) were have orphan children education (43.3%) that the majority of children in a secondary school (40%) of children studying in primary school (16.7%) of children were studying in a higher secondary school. Hindus (76.7%) period of stay majority of the children ( 26.7%) more than 1 year (26.7%) of children 2 years and (23.3%) of children above 4 years type of family children were in orphan (56.7%) .Over all observation of personality development scale shows that where almost of the children are superior (83.3%) few children are above average. It also that Reveals there was no significant association found with all demographic variable.

**KEY WORDS:-** Personality development, orphanage home, orphanage children

## BACKGROUND OF THE STUDY:

The word 'personality' originates from Latin word personal which means,, mask how one appears to others. Cattle (1950)viewed „personality “as a complex and differentiated structure of traits with its motivation largely dependent upon a subset of these the so called' 'dynamic traits “.these traits are responsible for uniqueness of each individual these personality traits are also called as” dimensions of personality”.Eyesanck(1968) defines' 'personality as more are less stable and enduring organization of a person's character, temperament' intellect and physique which determine his unique adjustment to his environment.”

**NEED FOR THE STUDY:**

A study on different types of parents and personality of their children revealed that the children whose parents were neglected and uninvolved got lower scores on social adequacy and perception of self worth in the family relationship. In a study the relative contribution of family structure to the prediction of cognitive performance among children was examined and found positive effect of this variable on cognitive development especially during early years (Silber 1989).

**STATEMENT OF THE PROBLEM:**

**A DESCRIPTIVE STUDY TO ASSESS THE PERSONALITY DEVELOPMENT AMONG THE ORPHAN CHILDREN AT SELECTED ORPHANAGE HOME IN PUDUCHERRY.**

**OBJECTIVES:**

- ❖ To assess the Personality development among orphan children.
- ❖ To Find out the association between personality development among of the orphan children with their selected demographic variables.

**MATERIALS AND METHOD:**

**Research Approach:** Quantitative research approach.

**Research Design:** descriptive survey design.

**Setting:** Baby Sarah Home Ariyankuppam, Puducherry

**Sampling Techniques:** The convenient sampling technique

**Sample Size:** 30 children from the Baby Sarah Home in Ariyankuppam.

**CRITERIA FOR SAMPLE SELECTION:**

The children who are all

- ❖ Both gender.
- ❖ Available during the day of data collection period
- ❖ Above the age of 10-15 years

**DESCRIPTION OF THE TOOL:**

This instrument was selected by the investigator with the help of various resources and review of literature. This questionnaire is used to assess the personality development of Baby Sarah Home in children.

**THE TOOL CONSISTS OF 2 SELECTIONS:**

Section A : Demographic variable

Section B: State trait personality development scale.

**SECTION A :DEMOGRAPHIC VARIABLE**

It is consist of demographic data such as age, educational status, occupation, income, religion, marital status, type of family and area of stay.

**SECTION B:STATE TRAIT PERSONALITY DEVELOPMENT SCALE**

The scale comprised of 23 statements which have to be rated on a 5 point scale.

**SCORING :**

The questionnaire with 23 statements it is a 5 point like scale. Read each statement and select the appropriate response to indicate how you feel right now, that it at this very moment

**There is no right or wrong answer**

5	4	3	2	1
Almost always	Sometime	Every once in a while	Rarely	Never

**The total score range of 70 to 50**

SCORE	LEVEL
Above 70	Superior
60-70	above average
50 – 60	average
Below 50	improvement

**METHOD OF THE DATA COLLECTION:**

State personality development schedule was used to collect the data which is require for the study to assess the level of personality development among 30 children in baby sarah home in Ariyankuppam at Puducherry.

**ETHICAL CONSERATION:**

- ❖ Prior to the data collection. Written permission was obtained.
- ❖ The subject was information about the purpose of the study and permission was obtained from them.

## DATA COLLECTION PROCEDURE:

Subject made comfortable during in terms instruction related to tools were given to facilitate co-operation.

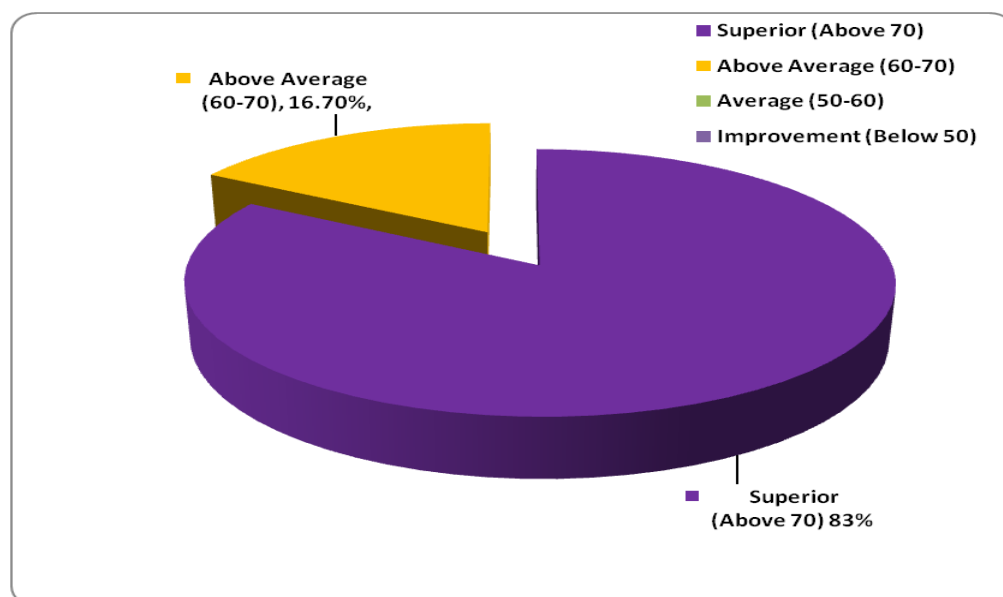
- ❖ Items asked as per state personality development schedule.
- ❖ Privacy has maintained.
- ❖ Responses recorded as per state personality development schedule.

## RESULTS AND FINDINGS:

- ❖ Highest (56.7%) of orphan children were in the age group of 15 – 20 years.
- ❖ Most of them were male (53.3%)
- ❖ Majority (43.3%) of them were from secondary school education.
- ❖ Majority (76.7%) of them were Hindu design.
- ❖ Majority (76.7%) of them were orphans children stay more than 1 year in home.

### Distribution of children personality according to the Personality Development Scale

- ❖ The following Figure shows the Distribution of children according to the Personality Development Scale. It shows that the majority of children were superior (83.3%). 16.7% of children were above average.



**Finding related to Association of Demographic Variables**

Sl. No	Demographic Variables	Superior (Above 70)		Above Average (60-70)		Average (50-60)		Improvement (Below 50)		X <sup>2</sup> Value	'p' Value
		F	%	F	%	F	%	F	%		
1	<b>Age in Years</b>									1.376	0.502 (NS)
	10-15 Years	11	36.7%	1	3.3%	0	0%	0	0%		
	15-20 Years	13	43.3%	4	13.3%	0	0%	0	0%		
2	<b>Gender</b>									0.429	0.513 (NS)
	Male	14	46.7%	2	6.7%	0	0%	0	0%		
	Female	11	36.7%	3	10%	0	0%	0	0%		
3	<b>Transgender</b>	0	0%	0	0%	0	0%	0	0%	1.385	0.5 (NS)
	<b>Education</b>										
	Primary School	10	33.3%	2	6.7%	0	0%	0	0%		
4	Secondary School	10	33.3%	3	10%	0	0%	0	0%	0.932	0.334 (NS)
	Higher Secondary School	5	16.7%	0	0%	0	0%	0	0%		
	<b>Religion</b>										
5	Hindu	20	66.7%	3	10%	0	0%	0	0%	2.743	0.433 (NS)
	Christian	5	16.7%	2	6.7%	0	0%	0	0%		
	Muslim	0	0%	0	0%	0	0%	0	0%		
	Other	0	0%	0	0%	0	0%	0	0%		
6	<b>Period of Stay</b>									2.894	0.235 (NS)
	6 Months	5	16.7%	2	6.7%	0	0%	0	0%		
	More than 1 Year	6	20%	2	6.7%	0	0%	0	0%		
	2 Years	8	26.7%	0	0%	0	0%	0	0%		
7	4 Years Above	6	20%	1	3.3%	0	0%	0	0%	2.894	0.235 (NS)
	<b>Type of Family</b>										
	Nuclear Family	6	20%	3	10%	0	0%	0	0%		
8	Joint Family	4	13.3%	0	0%	0	0%	0	0%	2.894	0.235 (NS)
	Orphan	15	50%	2	6.7%	0	0%	0	0%		

The table shows the association between the demographic variables and Personality Development Scale. It shows that none of the demographic variables had significant relation with the Personality Development Scale since the 'p' value is greater than 0.05.

**CONCLUSION:**

Based on findings of the study the level of personality development among orphan children. In baby home in puducherry can be conducted that most of the orphan children in were male 15-20 years education is secondary school religion in Hindu the period of stay more than 1 year hence level of personality development was more are less similar respecter demographic variables distribution of children according to personality development in scale rise superior no any significant association between the personality development been compered with secondary shoo orphan children.

**IMPLICATION :**

- ❖ Counseling programme has to be implemented in the schools and orphan homes.
- ❖ Psychological and Physiological growth and development should be assessed periodically among the children and adults.

**NURSING EDUCATION:**

- ❖ Counseling programme and special Education as to be invites to developed personality in orphan children.

**NURSING RESEARCH:**

- ❖ The finding of the study can be utilized for conducting research for large sample.

**RECOMMENDATION:**

On the bases on finding of the study, it is recommended that,

- ❖ Similar study can be conducted for large sample to fertilized findings
- ❖ A study can be done to evaluate the personality development among other orphan children and other orphan age home to compare the findings.

**BIBLIOGRAPHY****BOOK REFERENCE:**

- ❖ Amato p.r.[1986] marital conflict. The parent child relationship and child self-esteem. Family relations, 35, 403-410
- ❖ Berman.S. [1979] the psycho dynamic aspects of behavior u.s.a. basic books
- ❖ Bowlby.j [1952] maternal care and mental health, Geneva: world health organization monograph series.
- ❖ Bowlby.j.[1973] attachment and loss:II. Separation, New york: basic books.
- ❖ Buss.s.h.[1961] the psychology of aggression, new york: john wiley and sons. Inc.12

**JOURNAL REFERENCE:**

1. Mary c. townsend [2005] psychiatric mental health nursing, 5<sup>th</sup> [volume] Philadelphia[325-372]
2. Wanda k. mohr,[2009] psychiatric mental health nursing 7<sup>th</sup>, 3<sup>rd</sup>, Lippincott. Rawn [160-171]
3. K.p.neeraja,[2008] essentials of mental health and psychiatric nursing 1<sup>st</sup> edition [volume 2] tikendar p vij [551-554]
4. Pr.cmrs.laltiha[2007] mental health and psychiatric nursing [volume 3] ananda.m, Ramesh.m [65-69]
5. Amanpireetkaur [2013] atent book of psychology[237-241]
6. Gial, co. stuart [2009] principles and practice of psychiatric nursing [9<sup>th</sup> edition][volume] elsvier [696-700]